

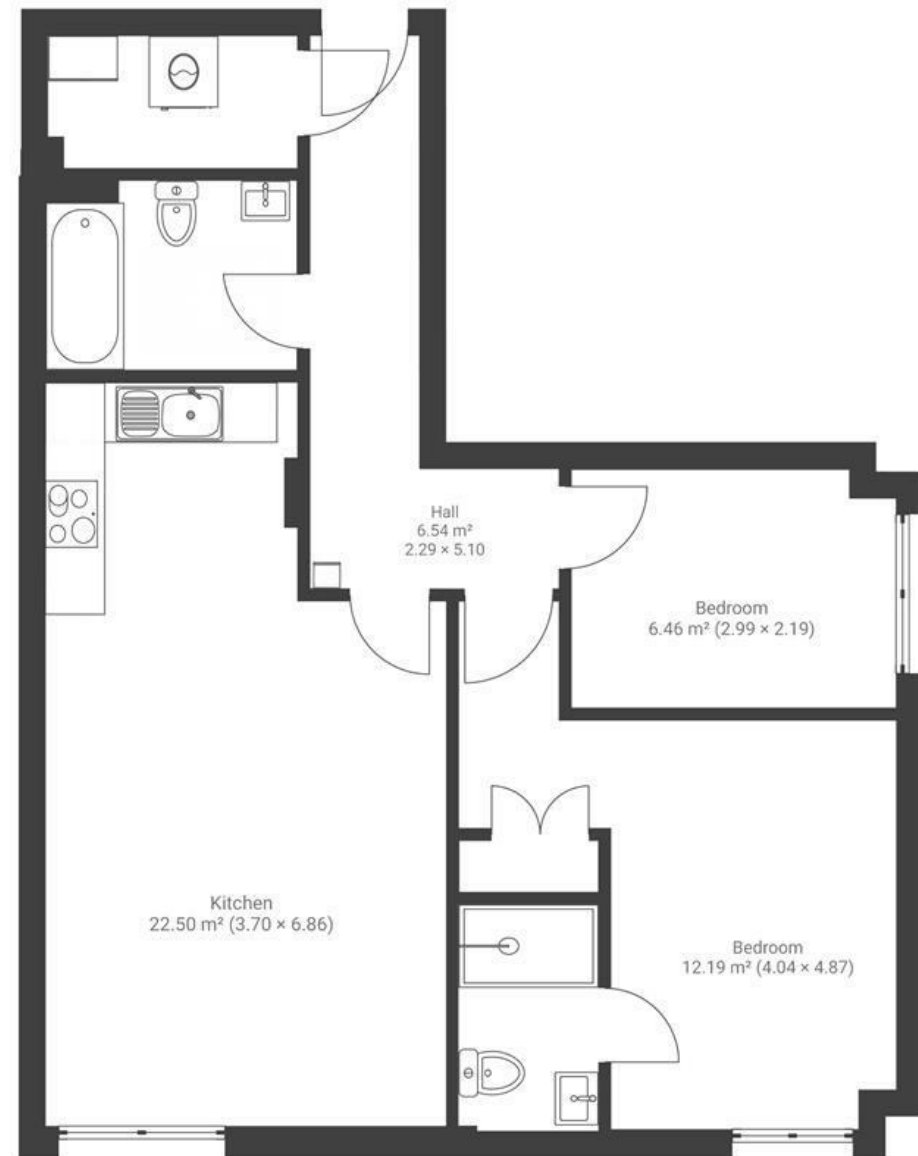
# Wilder House

## ST PAULS

APPROXIMATE FLOOR AREA  
67 SQM / 667 SQFT



SECOND FLOOR



**Boardwalk**

# Wilder Street

ST PAULS, BRISTOL



£250,000



2 Bedrooms



BS2 8PH



2 Bathrooms

*"The flat is so central which has been perfect for me in the short time I have been here! Its right next to Cheltenham/Gloucester Road with so much to do. I am only a short walk from Clifton to which is great on the weekends. Inside is really modern but also a very comfortable space to live, I will miss it loads."*

